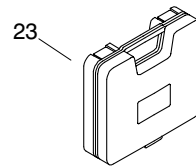
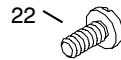
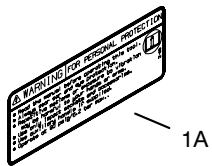
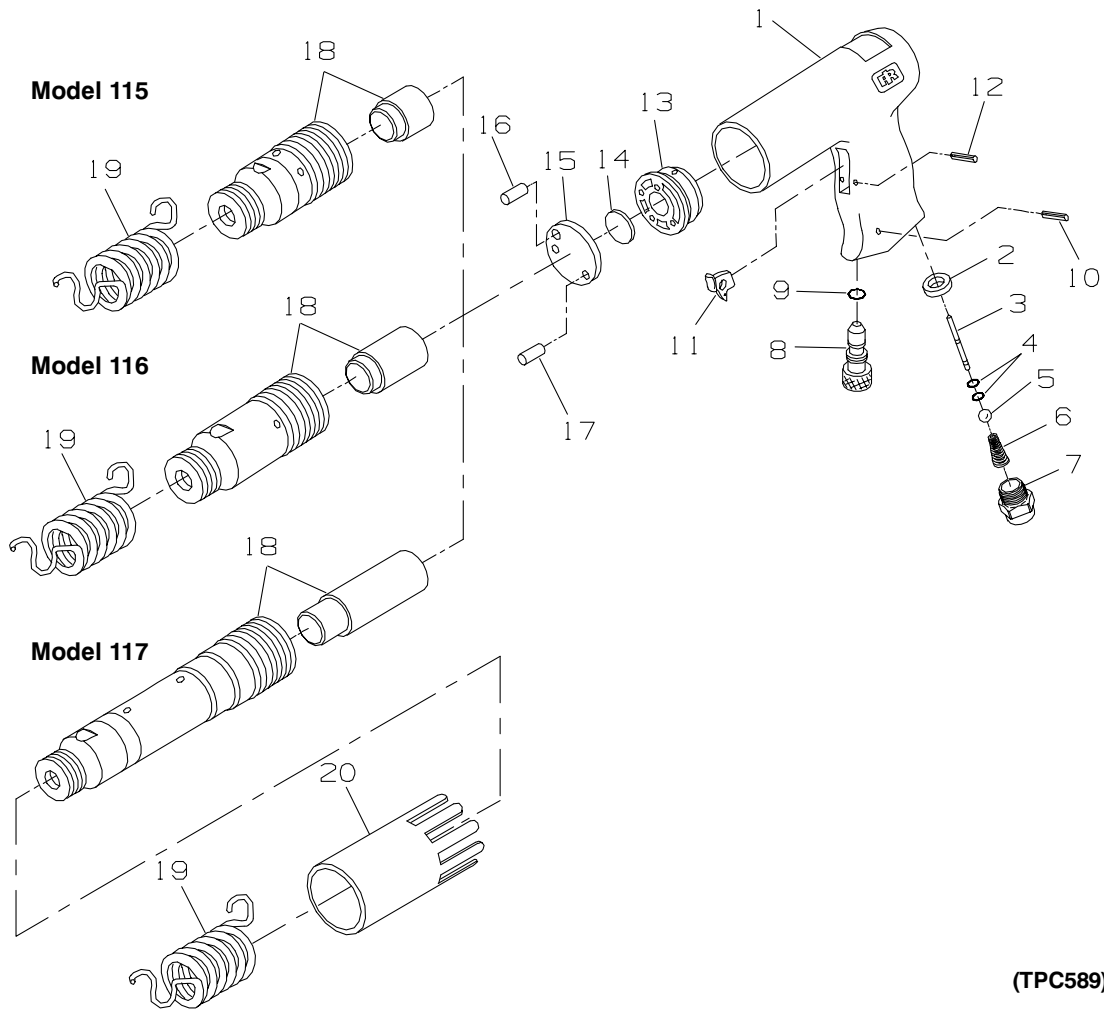


**MAINTENANCE INSTRUCTIONS
SECTION D'ENTRETIEN
WARTUNG
SEZIONE DI MANUTENZIONE
INSTRUCCIONES DE MANTENIMIENTO
ONDERHOUD**





PART NUMBER FOR ORDERING
 REFERENCE POUR COMMANDE DE LA PIECE
 BESTELNUMBER
 NUMERO DEL PEZZO PER L'ORDINAZIONE
 SIMBOLO DE LA PIEZA PARA PEDIDOS
 BESTELNUMMERS



1	Handle		17	Valve Cap Alignment Pin (small diameter)	115-32
	for 115	115-59			
	for 115-EU	115-EU-59	18	Barrel Assembly (includes piston)	
	for 116, 116H, 117			for 115	115-A6
	and 117H	117-59		for 116	116-A6
	for 116-EU, 116H-EU,			for 116H	116H-A6
	117-EU and 117H-EU . . .	117-EU-59		for 117	117-A6
1A	Warning Label			for 117H	117H-A6
	for 115, 116, 116H, 117		19	Spring Retainer	115-183
	and 117H	WARNING-6-99	20	Exhaust Deflector (for 117 and	
	for models ending in-EU . .	EU-99		117H only)	117-23
2	Throttle Ball Seat	116-303	21	Nameplate	
3	Throttle Plunger Assembly	117-A64		for 115	115-301
4	Throttle Plunger O-ring (2) . .	117-168		for 115-EU	115-EU-301
5	Throttle Ball	116-50		for 116	116-301
6	Throttle Ball Spring	116-11		for 116-EU	116-EU-301
7	Inlet Bushing	117-565		for 116H	116H-301
8	Power Regulator Assembly	117-A250		for 117	117-301
9	Regulator O-ring	117-167		for 117-EU	117-EU-301
10	Regulator Retaining Pin	116-120		for 117H	117H-301
11	Trigger	115-93	22	Nameplate Drive Screw (2)	222-302
12	Trigger Pin	116-121	23	Body Shop Chisel Kit	116-K5
13	Valve Seat	115-3			
14	Valve	115-2			
15	Valve Cap	115-4			
16	Valve Cap Alignment Pin (large diameter)	115-31			