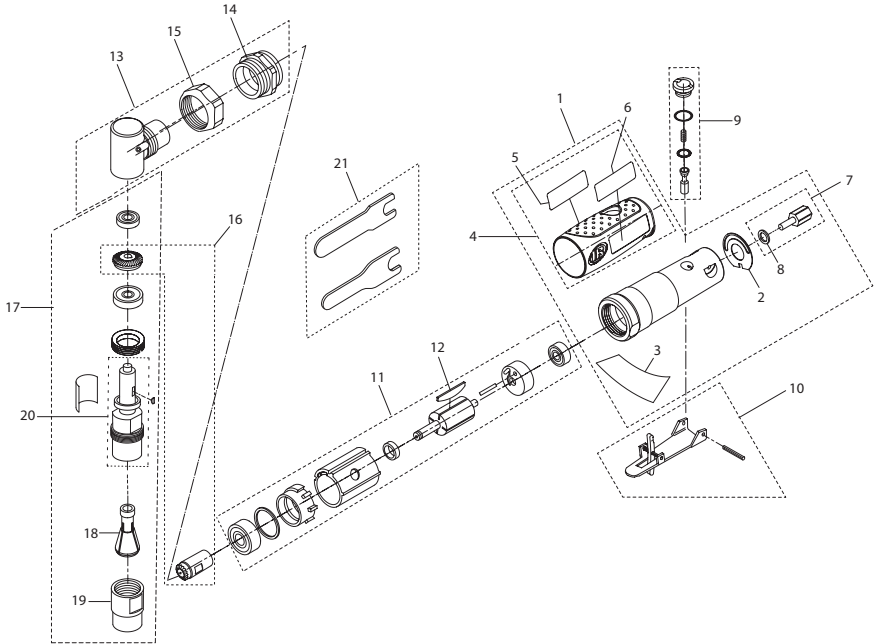


3102 and 3102-EU Air Die Grinder Exploded Diagram



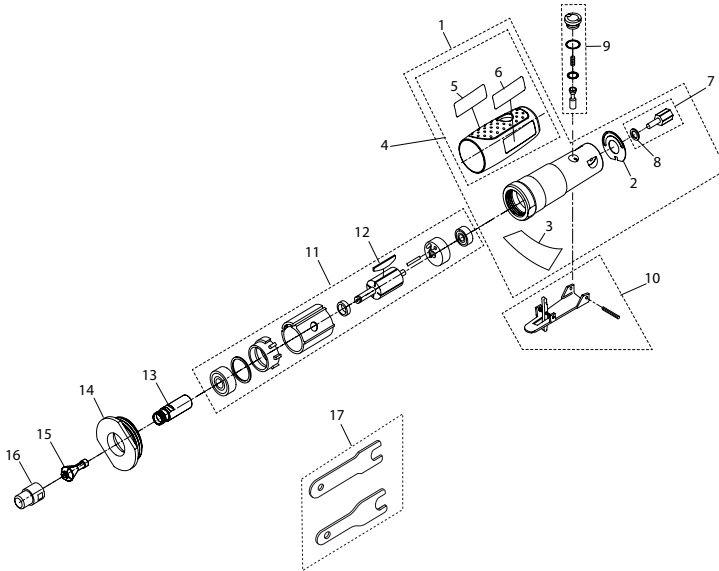
(Dwg. TP2234)

3102 and 3102-EU Air Die Grinder Parts List

| Item | Part Description | Part Number | Item | Part Description | Part Number |
|------|-------------------------|--------------|------|--------------------|----------------|
| 1 | Housing Assembly | | 11 | Motor Assembly | 3102-A53 |
| | for 3102 | 3102-A40 | 12 | Vane Set (4) | 3102-42-4 |
| | for 3102-EU | 3102-EU-A40 | 13 | Elbow Assembly | 3102-A550 |
| 2 | Gasket | 3102-283 | 14 | Clamp Nut | 3102-306 |
| 3 | Warning Label | 3102-99 | 15 | Nut | 3102-27 |
| 4 | Sleeve Assembly | | 16 | Gear Pinion Set | 3102-A552-1.25 |
| | for 3102 | 3102-A747 | 17 | Pinion Assembly | |
| | for 3102-EU | 3102-EU-A747 | | for 3102 | 302A-A551 |
| | | for 3102-EU | | 302A-EU-A551 | |
| 5 | Nameplate | | 18 | Collet | |
| | for 3102 | 3102-301 | | for 3102 (1/4") | 301-700 |
| | for 3102-EU | 3102-EU-301 | | for 3102-EU (6 mm) | 301-700B |
| 6 | Label | 3108-300 | 19 | Collet Nut | 301-699 |
| 7 | Inlet Bushing Assembly | 3102-565 | 20 | Arbor Kit | 301-K591A |
| 8 | O-Ring | 301-251 | 21 | Wrench Kit | 301-69 |
| 9 | Throttle Valve Assembly | 3102-A302 | | | |
| 10 | Lever Assembly | 3102-A400 | | | |

* Note: All EU models are supplied with 6 mm Collet, assembled with the tool. However another 1/4" collet, part number 301-700 is given as an accessory packed separately in the box.

3108 and 3108-EU Air Die Grinder Exploded Diagram



(Dwg. TP2235)

3108 and 3108-EU Air Die Grinder Parts List

| Item | Part Description | Part Number | Item | Part Description | Part Number |
|------|------------------------|--------------|------|-------------------------|-------------|
| 1 | Housing Assembly | | 9 | Throttle Valve Assembly | 3102-A302 |
| | for 3108 | 3108-A40 | 10 | Lever Assembly | 3102-A400 |
| | for 3108-EU | 3108-EU-A40 | 11 | Motor Assembly | 3102-A53 |
| 2 | Gasket | 3102-283 | 12 | Vane Set (4) | 3102-42-4 |
| 3 | Warning Label | 3102-99 | | Collet Body | 307A-214 |
| 4 | Sleeve Assembly | | 14 | Clamp Nut | 3108-27 |
| | for 3108 | 3108-A747 | 15 | Collet | |
| | for 3108-EU | 3108-EU-A747 | | for 3108 (1/4") | 301-700 |
| 5 | Nameplate | | * | for 3108-EU (6 mm) | 301-700B |
| | for 3108 | 3108-301 | 16 | Collet Nut | 301-699 |
| | for 3108-EU | 3108-EU-301 | 17 | Wrench Kit | 301-69 |
| 6 | Label | 3108-300 | | | |
| 7 | Inlet Bushing Assembly | 3102-565 | | | |
| 8 | O-Ring | 301-251 | | | |

* Note: All EU models are supplied with 6 mm Collet, assembled with the tool. However another 1/4" collet, part number 301-700 is given as an accessory packed separately in the box.

Parts and Maintenance

When the life of the tool has expired, it is recommended that the tool be disassembled, degreased and parts be separated by material so that they can be recycled.

Tool repair and maintenance should only be carried out by an authorized Service Center.

Refer all communications to the nearest **Ingersoll Rand** Office or Distributor.

Related Documentation

For additional information refer to:

Air Die Grinder Product Safety Information Manual 04580288.

Air Die Grinder Product Information Manual 16573487.

Manuals can be downloaded from www.irtools.com.